

Victorian Greenhouse Alliances Annual Conference 2022

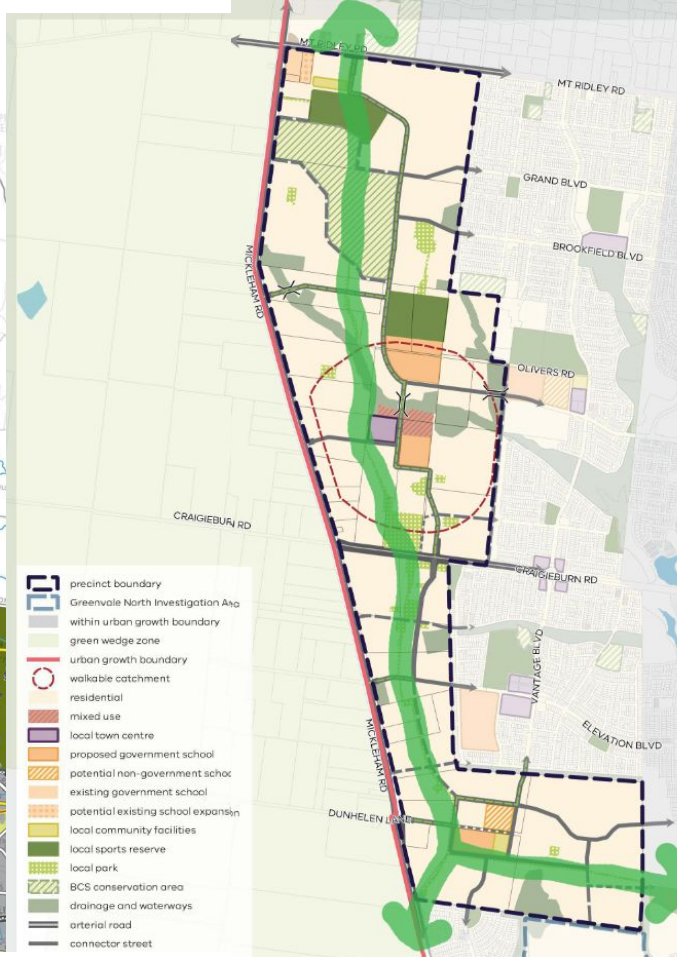
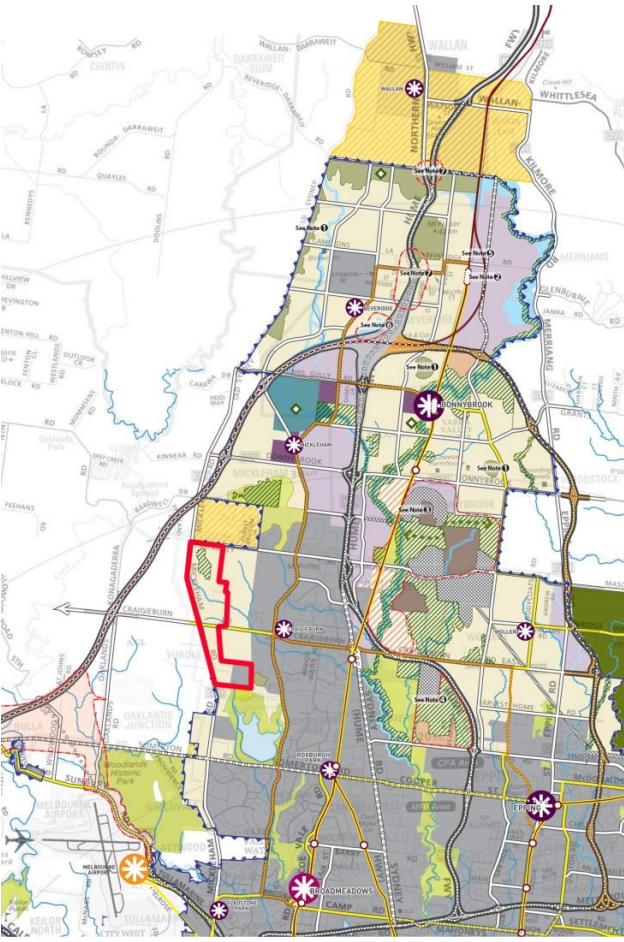
Tweaking the system – Craigieburn West Precinct Structure Planning

David Hajzler, Strategic Planner

Hume City Council



Environment,
Land, Water
and Planning



- precinct boundary
- Greenville North Investigation Aa within urban growth boundary
- green wedge zone
- urban growth boundary
- walkable catchment
- residential
- mixed use
- local town centre
- proposed government school
- potential non-government school
- existing government school
- potential existing school expansion
- local community facilities
- local sports reserve
- local park
- BCS conservation area
- drainage and waterways
- arterial road
- connector street

The 7 Key Sustainable Subdivision Categories

1.0 Site Layout & Liveability

Objective is to improve functional site layout and liveability with a key focus on connecting residents to local amenity. Sustainability criteria include:

- Location of community infrastructure
- Lot diversity
- Connectivity of street network and pedestrian network
- Integration with natural features
- Active transport
- Wayfinding

2.0 Streets & Public Realm

Objective is to create a people focused local street network to encourage walking whilst increasing biodiversity and mitigating the urban heat island effect. Sustainability criteria include:

- Street diversity
- Accessible and continuous cycling and pedestrian network
- Maximum street block length
- Density of street trees & vegetation
- Density of rest nodes and landscape features
- Safety

3.0 Energy

Objective is to improve energy efficiency and increase renewable sources of energy supply through maximising opportunities for solar access and support all electric suburbs. Sustainability criteria include:

- Energy efficiency
- Renewable energy
- Energy storage

4.0 Ecology

Objective is to retain and enhance ecology within the development plan or subdivision area through protecting native habitat and minimise impact on the natural environment. Sustainability criteria include:

- Canopy cover
- Biodiversity conservation
- Enhance biodiversity value

5.0 Integrated Water Management

Objective is to ensure integrated and collaborative management of all aspects of the water cycle, which includes reducing water consumption, seeking beneficial use of recycled water and stormwater, and incorporating water sensitive urban design and. Sustainability criteria include:

- Stormwater harvesting and reuse
- Water supply
- Water efficiency
- Stormwater treatment
- Flood management
- Water Sensitive Urban Design
- Site permeability

6.0 Urban Heat

Objective is to achieve urban heat reduction, manage the effects of urban heat within the subdivision area and maintain human health and wellbeing through periods of extreme heat. Sustainability criteria include:

- Access to shelter
- Urban heat mitigation

7.0 Circular Economy (Materials & Waste)

Objective is to reduce resource use and improve retention of value through the materials life cycle by encouraging re-use of onsite materials, using recycled materials and providing for resource recovery infrastructure. Sustainability criteria include:

- Low embodied carbon
- Recycled content
- Local sourcing
- Future recyclability
- Durable materials
- Certification
- Organics collection and processing

Set your objectives

But what do you actually want?

- Which trees to protect?
- Where are catchment gaps?
- Where will people go?

How can these objectives be combined?



REMOVE



RETAIN



NEGOTIATE

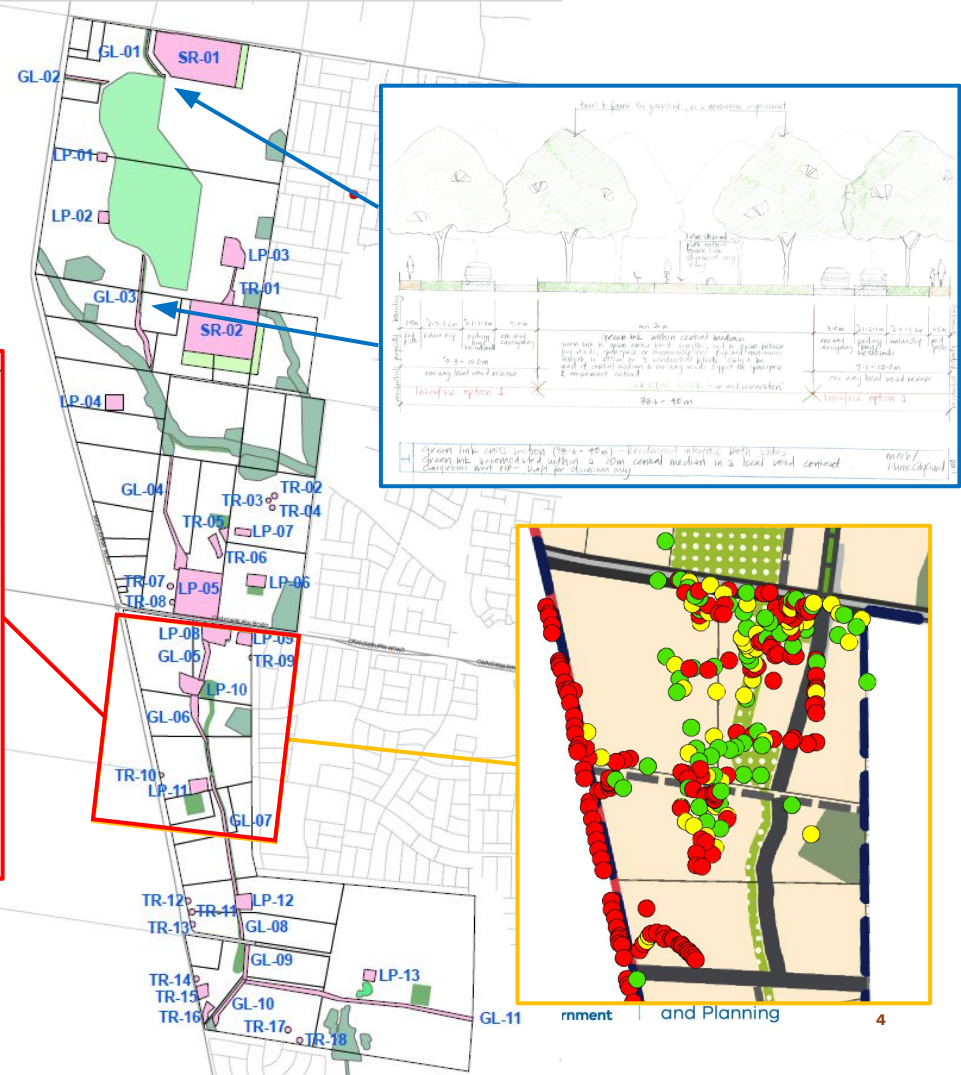
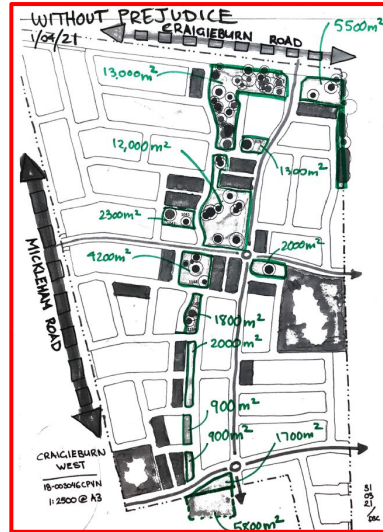


clim

What can you leverage?

The tyranny of the 10% open space target

Make alliances use the power afforded to developers and other agencies



Reflections

- Be passionate
- Be persistent
- Growth area planning is fun and important!



The 7 Key Sustainable Subdivision Categories

1.0 Site Layout & Liveability

Objective is to improve functional site layout and liveability with a key focus on connecting residents to local amenity. Sustainability criteria include:

- Location of community infrastructure
- Lot diversity
- Connectivity of street network
- Integration with natural features
- Active transport
- Wayfinding

2.0 Streets & Public Realm

Objective is to create a people focused local street network to encourage walking whilst increasing biodiversity and mitigating the urban heat island effect. Sustainability criteria include:

- Street diversity
- Accessible and continuous cycling and pedestrian network
- Maximum street block length
- Density of street trees & vegetation
- Density of rest nodes and landscape features
- Safety

3.0 Energy

Objective is to improve energy efficiency and increase renewable sources of energy supply through maximising opportunities for solar access and support all electric suburbs. Sustainability criteria include:

- Energy efficiency
- Renewable energy
- Energy storage

4.0 Ecology

Objective is to retain and enhance ecology within the development plan or subdivision area through protecting native habitat and minimise impact on the natural environment. Sustainability criteria include:

- Canopy cover
- Biodiversity conservation
- Enhance biodiversity value

5.0 Integrated Water Management

Objective is to ensure integrated and collaborative management of all aspects of the water cycle, which includes reducing water consumption, seeking beneficial use of recycled water and stormwater, and incorporating water sensitive urban design and. Sustainability criteria include:

- Stormwater harvesting and reuse
- Water supply
- Water efficiency
- Stormwater treatment
- Flood management
- Water Sensitive Urban Design
- Site permeability

6.0 Urban Heat

Objective is to achieve urban heat reduction, manage the effects of urban heat within the subdivision area and maintain human health and wellbeing through periods of extreme heat. Sustainability criteria include:

- Access to shelter
- Urban heat mitigation

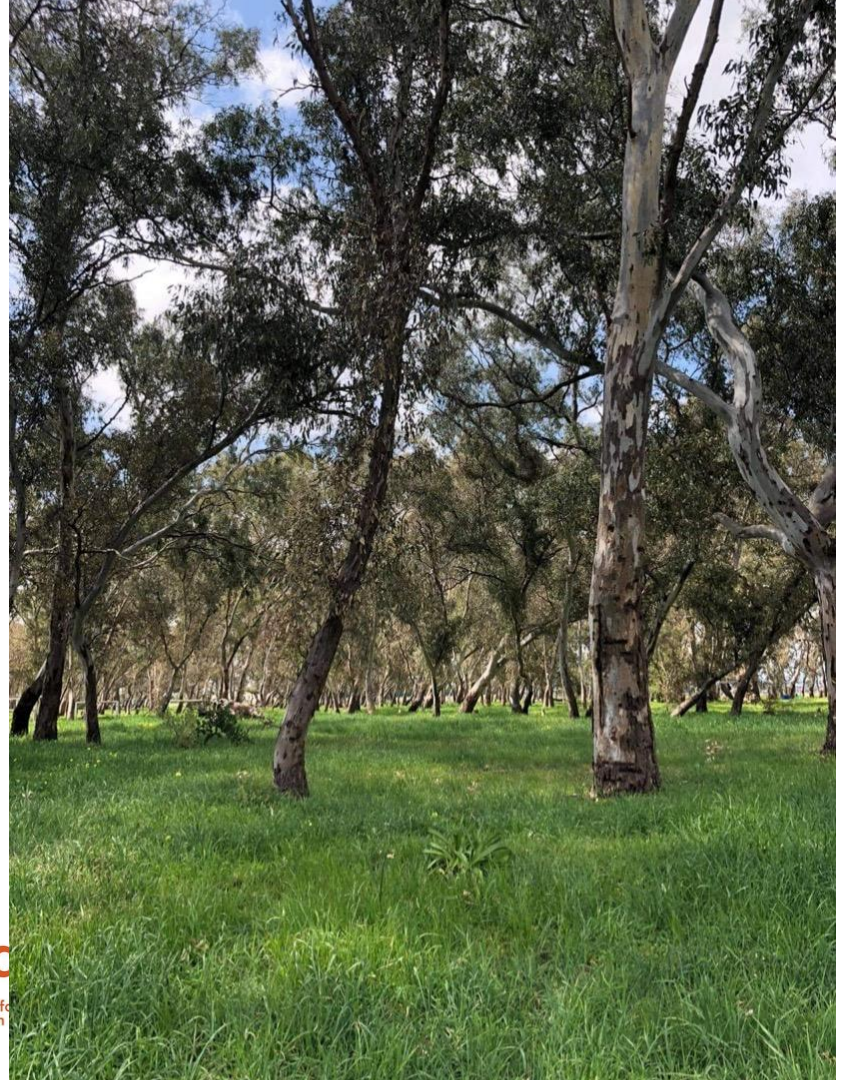
7.0 Circular Economy (Materials & Waste)

Objective is to reduce resource use and improve retention of value through the materials life cycle by encouraging re-use of on-site materials, using recycled materials and providing for resource recovery infrastructure. Sustainability criteria include:

- Low embodied carbon
- Recycled content
- Local sourcing
- Future recyclability
- Durable materials
- Certification
- Organics collection and processing

Victorian Greenhouse Alliances Annual Conference 2022

Thank you



BARWON SOUTH WEST
CLIMATE ALLIANCE



casbe

Council Alliance for a
Sustainable Built Environment



CENTRAL
VICTORIAN
**Greenhouse
Alliance**



EASTERN ALLIANCE
FOR GREENHOUSE ACTION



goulburn murray
climate alliance



northern alliance for
greenhouse action